

# SETPPOINT SYSTEM PROCEDURE

## CONFIRM CHARGER FIT

- Place the Charger around the patient's neck while they are seated upright.
- Verify that the magnetic latch closes and remains latched without discomfort.

See section **Charger Fit Confirmation** for more details.

## IMPLANTATION LOCATION

- On the left cervical vagus nerve.
- Below both the inferior and the superior cervical cardiac branches.
- Ideally between the level of the C4 and C6 cervical vertebrae.

See section **Implantation Location** for more details.

## SURGICAL PROCEDURE

See section **Implantation** for more details.

### 1. Nerve Exposure

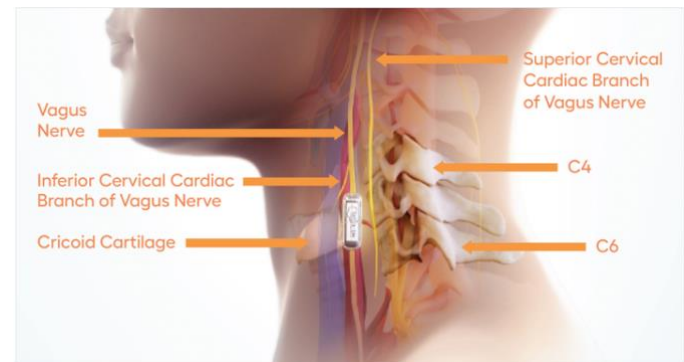
- 1.2 in (3 cm) branch-free segment of left vagus nerve.

### 2. Implant Placement

- Place the Pod on the left vagus nerve.
- Insert the Implant into the Pod, with the head-shaped marking oriented rostrally.
- Visualize that nerve is seated through ends of Pod groove and is in Implant saddle.
- Ensure that no extra nerve branches or other structures are entrapped in Pod.

### 3. Closure

- Suture Pod through suture holes with non-absorbable 5-0 Prolene on a non-cutting needle and no more than 4 throws.
- Gently confirm Pod rotates and slides freely on the nerve.



1.2 in (3 cm)  
segment of left  
vagus nerve for  
Pod deployment.



Avoid excessive  
manipulation or  
traction on vagus  
nerve.



No electrocautery  
or RF ablation  
within 2 cm of  
Implant.

It is important to read and understand the entire contents of the Surgeon IFU prior to use of the SetPoint System. Make sure to brief the patient on contraindications and warnings using section **Important Safety Information**.

